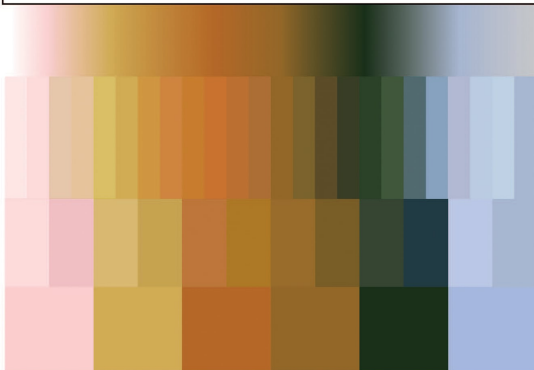




**Landscapes for Adaptation
Evidence from China**

Charles Waldheim
with Boya Zhang



Landscapes for Adaptation

Evidence from China

Charles Waldheim

ISBN	9781961856332
Publisher	ORO Editions
Binding	Hardback
Territory	World excluding USA, Canada, Australasia. Asia non-exclusive.
Size	267 mm x 229 mm
Pages	400 Pages
Illustrations	350 color
Price	£55.00

- Landscapes for Adaptation presents dozens of built experiments in climate adaptation currently underway
- For Planners, Policy Makers, Government Officials, Climate Scientists, Climate Researchers, Climate Advocates, Architects, Engineers, Landscape Architects, Urban Designers, Academics and Students Across Those Disciplines and Professions

The climate crisis is now readily evident rather than a future possibility. After decades of failing to mitigate our impacts, we must now adapt to survive in the context of a rapidly changing climate. Adaptation requires enlightened planning and reconceptualisation of our urban environments. The engineering solutions inherited from the nineteenth century are obsolete. These Western single-purpose civil engineering systems are brittle and prone to catastrophic failure. Climate adaptation demands that we replace those obsolete systems with landscapes for human adaptation. This process demands the best available scientific knowledge, experiments, and evidence. In the twenty-first century, China has built more experiments in climate adaptation than any other culture. An overwhelming number of those experiments are the work of Kongjian Yu and his firm, Turenscape. Over the past two decades, Turenscape has realised hundreds of built experiments in climate adaptation through landscape architecture and planning. This publication presents 60 of the most significant of those experiments. The book analyses those projects and evidence of their environmental performance. **Landscapes for Adaptation** assembles a menu of practical strategies and real-world tactics for landscape adaptation in China and around the world.

Charles Waldheim is an architect and urbanist whose research examines the relationships between landscape, ecology, and contemporary urbanism. Waldheim is John E. Irving Professor of Landscape Architecture at the Harvard University Graduate School of Design where he directs the Office for Urbanization.

