



Late Constable

Anne Lyles

Matthew Hargraves

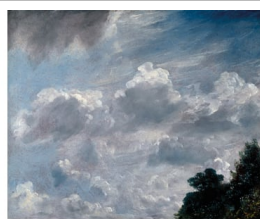
ISBN	9781912520725
Publisher	Royal Academy of Arts
Binding	Hardback
Territory	World
Size	190 mm x 260 mm
Pages	152 Pages
Illustrations	100 color
Price	£21.95

- A fascinating study of the art and influence of one of Britain's greatest landscape painters
- Accompanies an exhibition at the Royal Academy, London, 30 October 2021 – 13 February 2022

"Forget the rural idylls. This sublime show recasts John Constable as the godfather of the Avant Garde, producing explosive, nightmarish paintings of a vanishing world." – **Jonathan Jones, Guardian**

One of Britain's greatest landscape painters, John Constable (1776–1837) was brought up in Dedham Vale, the valley of the River Stour in Suffolk. The eldest son of a wealthy mill owner, he entered the Royal Academy Schools in 1800 at the age of 24, and thereafter committed himself to painting nature out of doors. His 'six-footers', such as *The Hay Wain* and *The Leaping Horse*, were designed to promote landscape as a subject and to stand out in the Academy's Annual Exhibition. Despite this, he sold few paintings in his lifetime and was elected a Royal Academician late in his career.

With texts by leading authorities on the artist, this handsome book looks at the freedom of Constable's late works and records his enormous contribution to the English landscape tradition.



John Constable, Cloud Study, 11 September 1821
Oil on paper, 100 x 125 cm
Royal Academy of Arts, London
Photo © Royal Academy of Arts, London. Photographer: John Hammond



John Constable, The Leaping Horse, 1821
Oil on canvas, 100 x 125 cm
Royal Academy of Arts, London
Photo © Royal Academy of Arts, London. Photographer: Prudence Curving Associates Limited