

Scene Through Wood

A Century of Modern Wood Engraving

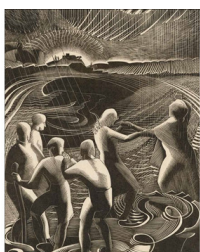
Anne Desmet RA

ISBN	9781910807378
Publisher	Ashmolean Museum
Binding	Paperback / softback
Territory	World excluding Australasia
Size	280 mm x 220 mm
Pages	256 Pages
Illustrations	294 color, 5 b&w
Price	£25.00

- Covers the entire history of wood engraving, including every major artist of the genre
- Accompanies the *Scene through Wood: A Century of Wood Engraving* exhibition at the Ashmolean Museum, from 28 March to 12 July 2020

The Ashmolean Museum houses one of the most extensive collections of wood engravings in the world. The collection effectively began with the gift in 1964, by Arthur Mitchell, of over 3,000 prints, including a large group of wood engravings. During the 1980s and 1990s, it expanded remarkably with acquisitions of large groups of prints, often as gifts from the artists, resulting in a succession of monographic exhibitions on some of the most important wood engravers. They included John Farleigh (1986), John Buckland Wright (1990), Clare Leighton (1992), Monica Poole (1993) and Anne Desmet (1998). A key point in this period of expansion was the acquisition of a comprehensive body of work by Gertrude Hermes and Blair Hughes-Stanton in 1995 from the artists' family, which resulted in a memorable exhibition organised by Katharine Eustace. More recently, the Ashmolean has formed a close partnership with the Society of Wood Engravers (SWE) and has been keeping the collection up to date by acquiring work by members, both at the Society's annual exhibition and privately. This exhibition catalogue covers the entire history of wood engraving, including every major artist of the genre.

Anne Desmet, is only the third wood engraver to have been elected a Royal Academician; her predecessors were Gertrude Hermes and Charles Tunnicliffe. She has close links with the Ashmolean and with Oxford, having studied at the Ruskin School of Drawing and Fine Art as an undergraduate at Worcester College, which recently elected her to an honorary fellowship. Anne has worked tirelessly on this project, bringing a particular sensitivity to the selection as one of the most distinguished and imaginative of wood engravers.



Wood Engraving takes Centre Stage
George William Miller (1892)

Wood engraving was a major art form in the 19th and 20th centuries. It was a craft that required skill and patience, and it was often used to create illustrations for books and magazines. The Ashmolean Museum has a large collection of wood engravings, and this exhibition catalogue provides a comprehensive overview of the art form.

